

PRIVATE DINING & EVENTS

with Corbin & King


The WOLSELEY


The Delaunay


THE CRAZY COQS

Café
WOLSELEY

WHY CHOOSE US?



The Private Dining Rooms at The Wolseley, The Delaunay, Brasserie Zédel and Café Wolseley are as distinctive as the restaurants themselves.

Perfectly suited to hosting all manner of events and special occasions – from business breakfasts, to engagement lunches, celebratory afternoon teas or birthday dinners – our Private Rooms offer the same meticulous service and exceptional food for which our restaurants have become renowned, in a more intimate setting.

A dedicated event planner will coordinate every aspect of your experience, assisting with any bespoke requirements you may have.

If you would like any help with planning the rest of your day or evening in the area, our knowledgeable team would be only too happy to pass on their recommendations.

please call: +44 (0) 20 7659 9315

or email: privatedining@corbinking.com





THE CRAZY COQS

Situated within Brasserie Zédel lies the Crazy Coqs Cabaret & Bar. With its magnificent Art Deco interiors, it is truly a one-of-a-kind space in the heart of London's West End.

The resplendent room features a striking monochrome design with red accents, along with a dedicated bar and stage.

The Crazy Coqs can accommodate up to 80 guests for standing receptions and up to 50 guests for seated events, making it an ideal setting for any private event – from lunches to parties and launches.

The room is available to hire during the day. If you would like to use The Crazy Coqs for an evening event, please speak with our events team directly.

A hire charge for evenings may apply, along with a minimum spend. The space is wheelchair accessible, with lifts available.

THE MENUS



All our menus use seasonal produce and ingredients that vary throughout the year. Each menu has been created by Brasserie Zédel's Head Chef, Charles Hilton and incorporate the remarkable value, traditional French dishes for which the restaurant has become renowned.

We are pleased to cater for any dietary requirements you may have.

The Crazy Coqs also offers a curated selection of carefully sourced fine wines and champagne to complement your chosen menu.





Brasserie Zédel, 20 Sherwood Street, London W1F 7ED

For availability and further information,
please email events@brasseriezedel.com

www.brasseriezedel.com/private-hire



The party was a huge success due in no small part to the wonderful staff, who all worked so hard to make sure the evening was perfect.

The food was delicious and I am beyond flattered I was able to use Crazy Coqs – surely the best party venue in London.”

**Thane Prince,
Private Party**





The WOLSELEY



Often described as “one of the most beautiful in London”, The Wolseley’s Private Dining Room provides a secluded haven overlooking the restaurant below.

Accessed via its own private staircase and elegantly designed to complement the Art Deco interiors of the iconic restaurant below, the room is subtly hidden from view.

With arched windows on all four sides, it is bathed with natural light during the day and the glow from Piccadilly at night.

Perfect for every occasion – from working breakfasts, to birthday celebrations and all that’s in between.

THE ROOM



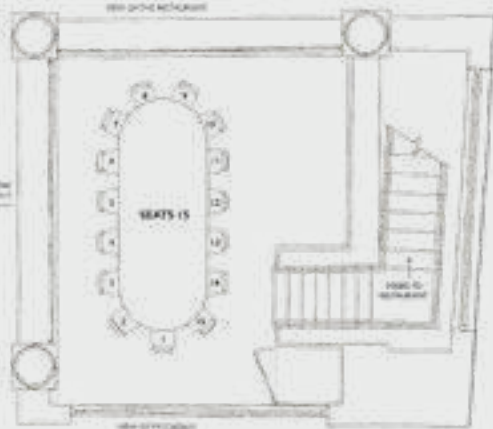
The Wolseley's Private Dining Room can cater for up to 15 guests.

The room is available to book seven days a week, right through from breakfast to dinner.

We can be flexible on timings to suit your occasion – our events team will discuss timings with you when booking.

There is no hire charge for the room, but a minimum spend* starting at £250 applies to all bookings.

Please note that small bouquets of seasonal flowers are provided as a matter of course, but larger arrangements (as seen in this brochure and on our website) are an optional extra that we would be delighted to arrange for you on request.



**The minimum spend is the minimum amount required to take the room and not a totally inclusive package price.*



THE MENU



From our celebrated breakfast dishes, to ever-popular afternoon tea and all-day food favourites, there is a menu to suit every occasion.

Expertly designed by our Head Chef, David Stevens, dishes are inspired by the grand café traditions of Europe using only the finest seasonal ingredients.

A carefully curated selection of fine wines and champagnes are also available to complement your meal. Bespoke pairings are available on request.

Menus change throughout the year, and our kitchen team are happy to cater for any dietary requirements you may have – please let us know when booking.

View our current sample menus online.
www.thewolseley.com/private-dining/





160 Piccadilly, London, W1J 9EB

For availability and further information,
please call 020 7659 9315 or email pdr@thewolseley.com

www.thewolseley.com/privatedining

“The ONLY private room to dine in”

Charlie Miller,
Executive Fashion & Jewellery Director,
Porter magazine

“I just wanted to take the time to say thank you so much to you and the staff for providing a very memorable experience. Some of my guests were very keen to find an excuse to hire the room for themselves at a later stage! Once again, The Wolseley never disappoints.”

Private client,
Leaving Party



The Delaunay



Steeped in the glamour of 1920s Europe, The Delaunay's spectacular Private Dining Room will elevate every occasion.

On a raised level with views of the restaurant, the room benefits from ample natural light, yet remains shielded from the outside world.

Complete with dark wood panelling, brass fixtures, marble counters and original paintings from the restaurant's outstanding art collection, the room provides a warm and inviting space.

Situated in the heart of the West End, The Delaunay is within walking distance of numerous theatres along with Covent Garden, Soho, The Strand, Somerset House, Lincoln's Inn Fields, Temple and the Southbank.

THE ROOM



The Delaunay's Private Dining Room can accommodate up to 24 guests for larger celebrations or meetings.

A flexible space, the room can also be divided to offer two more intimate spaces for up to 10 and 16 guests respectively.

Available to hire for breakfast, lunch and dinner, we can be flexible on timings and will liaise with you on what works best for your event.

The space is also wheelchair accessible on request.

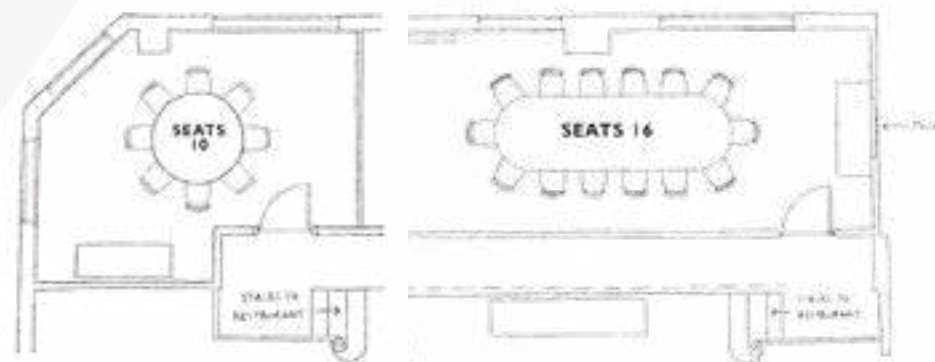
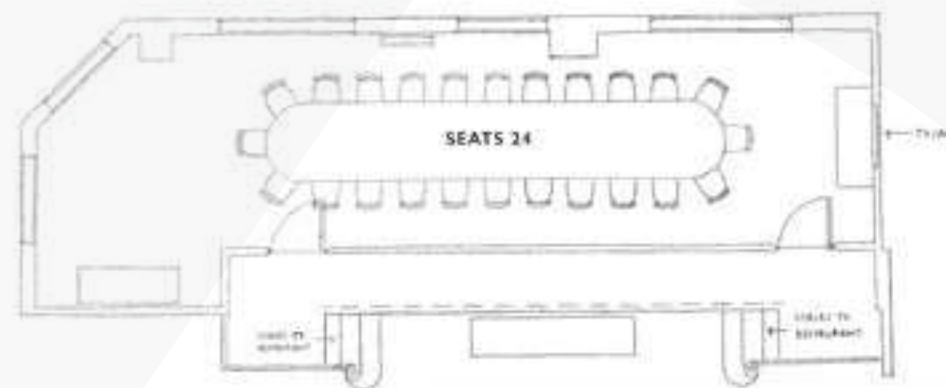
There is no hire charge for the rooms – only a minimum spend* starting from £200 applies.

Please note that small bouquets of seasonal flowers are provided as a matter of course, but larger arrangements (as seen in this brochure and on our website) are an optional extra that we would be delighted to arrange for you on request.

**The minimum spend is the minimum amount required to take the room and not a totally inclusive package price.*



THE ROOM



THE MENU



Incorporating classic dishes and house favourites – from Stroganoff to Apple Strudel – our menus are cooked simply and beautifully presented.

Designed by our Head Chef, Christian Turner, our menus use only the finest seasonal produce and change regularly throughout the year.

Our team can cater for breakfast, lunch or dinner – and will be pleased to adapt dishes for any dietary requirements your party may have. A reduced a la carte menu can also be provided.

To complement your chosen menu, a curated selection of fine wines and champagne are available, with a bespoke pairing option for those wanting an extra touch of indulgence.





55 Aldwych, London, WC2B 4BB

For availability and further information,
please call 020 7659 9316 or email pdr@thedelaunay.com

www.thedelaunay.com/private-dining



“I’d like to express our thanks to everyone involved in the planning and execution of our event. It was a great success and my sister-in-law had a wonderful time enjoying the hospitality in your private room.”

Private client,
Birthday Dinner

“I just wanted to drop you a line to say thank you to the team at The Delaunay this morning. The breakfast went perfectly and our guests adored it. Please could you pass on my special thanks to David as he took such great care of us!”

Private client,
Corporate Breakfast

Café WOLSELEY

Situated out of London in Bicester Village, Café Wolseley is Corbin & King's first restaurant outside of the city.

Echoing the elegant design of the restaurant, Café Wolseley's Private Room is complete with black lacquered wood, intricate gold detailing and brass fixtures.

Flooded with natural light during the day, the room is also particularly atmospheric at night.

Accommodating up to 40 guests in a variety of configurations, the room is found adjacent to the main restaurant – an additional area for canapé receptions or welcome drinks is also available.

Our team can cater for any occasion, with menus available for breakfast, lunch, afternoon tea or dinner.

We offer flexibility on timings and will liaise with you on what works best for your event.

There is no hire charge for the room, though a minimum spend may apply.

145 Pingle Drive, Bicester Village, OX26 6WD

For availability and further information,
please email pdr@cafewolseley.com

www.cafewolseley.com/privatedining

please call: +44 (0) 20 7659 9315



CORBIN & KING



Chris Corbin and Jeremy King have been partners in business for more than 40 years.

Since opening Le Caprice in 1981, they have gone on to create some of London's most iconic and best-loved restaurants, including The Ivy and J.Sheekey.

Beginning with The Wolseley in 2003, the current Corbin & King portfolio includes The Wolseley in Mayfair, The Delaunay in Aldwych, Zédel in Piccadilly, Colbert in Chelsea, Fischer's in Marylebone, Bellanger in Islington, Soutine in St Johns Wood and Café Wolseley at Bicester Village.

Curating unique spaces with timeless atmospheres is what defines each Corbin & King restaurant – and our Private Dining Rooms are no different.

Evoking a sense of the theatrical, each restaurant pays homage to the space it occupies.

"Corbin & King know that atmosphere makes a restaurant and the pair are masters at creating it"

Evening Standard

